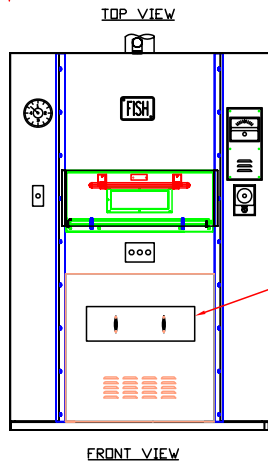
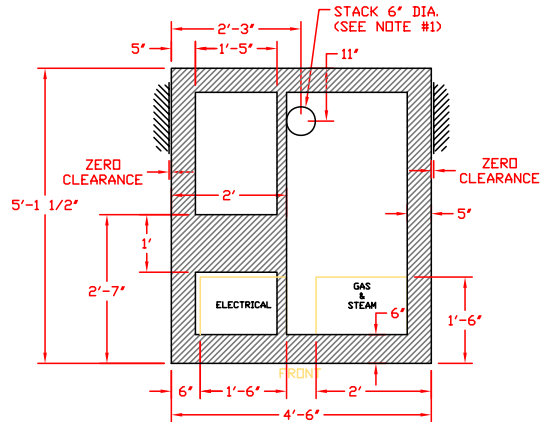


REV	DESCRIPTION	BY	DATE	MODEL: P-30-CE	UNLESS OTHERWISE SPECIFIED TOLERANCES ON DIMENSIONS IN INCHES DECIMALS .XXX ± .030 .XX ± .060 FRACTIONAL ± 1/16	THIS DRAWING IS THE PROPERTY OF CAMPBELL INTERNATIONAL, AND MAY NOT BE REPRODUCED FOR ANY PURPOSE WITHOUT WRITTEN CON- SENT OF THE COMPANY.	FISH OVEN & EQUIPMENT, INC. WAUCONDA, IL 60084	DWG. # P-30B-FP	REV.
1/A	ADDED P-30B-8	JJF	8/10/01	STYLE: P-30B-8					B
2/B	ADD FRONT AND SIDE VIEWS	W.S.	05/17/03						
				ASSEMBLY	NO REQ'D				PAGE
					MAT'L:	WT:			DATE



SERVICE CONNECTIONS

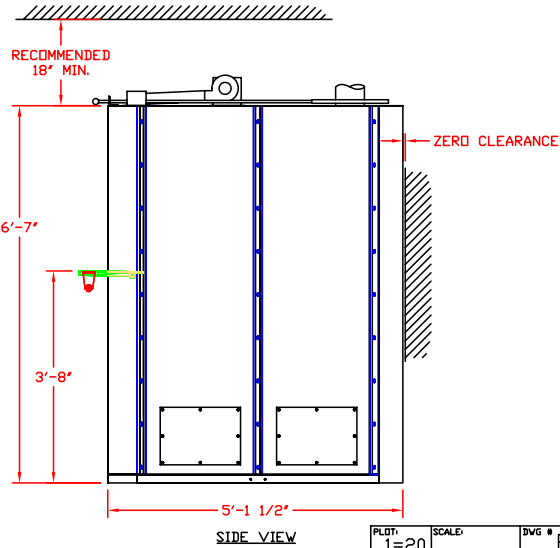
- 1 - ELECTRICITY AND GAS LINES MAY BE BROUGHT THROUGH THE FLOOR OUTSIDE SHADED AREAS, PREFERABLY IN AREAS SHOWN.
- 2 - ELECTRICITY AND GAS LINES ABOVE FLOOR LEVEL MAY BE BROUGHT THROUGH A SIDE OR REAR WALL NEAR THE FLOOR BY CUTTING THE REQUIRED HOLES.
- 3 - STEAM MAY BE BROUGHT IN HERE FROM BELOW OR ABOVE (IF REQUIRED).

SERVICE LINES

- DNE - 1/2" ELECTRICAL CONDUIT - 110V/1PH/60HZ/15AMP
- DNE - 3/4" GAS LINE - 70,000 BTU
- DNE - ADDITIONAL ELECTRICAL CONDUIT WHEN 220V IS USED FOR ELECTRIC BURNER AND DRIVE.
- DNE - 3/4" PIPE, STEAM LINE (IF REQUIRED)

NOTES:

- 1 - A 6" EXHAUST FLUE MUST BE PROPERLY VENTED TO THE OUTSIDE OF THE BUILDING AND PROVIDE A 0.03-0.05 INCH WATER COLUMN UP DRAFT. A VERTICAL DRAFT DIVERTER OR EQUIVALENT, MUST BE INSTALLED IN ALL NATURALLY VENTED OVENS.



PLOT: 1=20 SCALE: DWG # P-30B-FP